

BLUZAC

Italian Filtration
Solutions

ITALIAN
FILTRATION
SOLUTIONS

**TAILOR-MADE SOLUTIONS
FOR ALL PROJECTS**

FILTERS, STEAM TRAPS, SIGHT GLASSES, FLEXIBLE
HOSES AND MUCH MORE.

filters

Our products

filters

The arrival of Blu Zac in the filtration sector provides the market with a new, high-quality alternative.

Thanks to the founders' dynamism, more than 20 years of experience working with some of the biggest companies in the Oil & Gas industry and their expert team of staff, **Blu Zac products offer the added value of precision machining as well as metalwork fabrication.**

The strength of this strategy is that, as well as ensuring a high-quality final product, it enables Blu Zac to maintain competitive prices.

Every product, whether standard or custom-built, is researched, designed and developed right down to the smallest detail by our engineering department and manufactured by our specialist technicians.

Blu Zac was founded to manufacture filters. Our product range includes Temporary, Conical, Y, Tee, Angle Tee, Lateral, Simplex, Duplex, Two-Stage and Special Filters as well as Flame Arrestors, Sight Glasses, Steam Traps and flexible tubes for special applications.

Blu Zac is a new organization. With its versatility and its engineering skills, it is the ideal choice for companies in search of a partner capable of developing new technological solutions.

Blu Zac engineering is developed in accordance with ASME, UNI, API and EN regulations and, on request, all product solutions can be checked with fluid dynamics, finite element and seismic calculation software.

Blu Zac is green: with alternative energy, Blu Zac is also looking to the future of its products, researching applications in the solar and geothermic energy markets.

FILTER "Y" FORGED



**Series: FYFO - FYCA (cast)
FYWE (welded,lateral) - FYMA (machined)
from 1/2" to 2" max rating 4500**

The Y filter is the most common and economical type of filter for permanent fluid or gas applications.

Thanks to its compact construction, its light weight and its easy access for rapid cleaning, it is used for many generally standard system applications.

Permanent filter, straight line, suitable for filtering fluids in either the liquid state (water, seawater, petroleum and its derivatives) or the gaseous state (gas, air, chemical products) through a perforated plate filter element placed perpendicular to the direction of flow.

Obtained from a machined forged billet, the standard equipment includes a screen suitable for high pressures, which is easy to maintain and replace; capable of filtration of more than 200% of the inlet area.

FILTER MONOBASKET TYPO



**Series: FMBA - FCAR (cartridge)
FDPX (duplex)
from 2" to 24" and over, rating from
150 to 2500**

Permanent filter type, offering a larger filtering surface area than other types of filters, ensuring minimal pressure loss even at high flow rate.

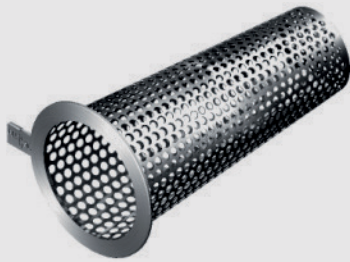
It has a greater capacity for particulate accumulation, and is recommended for the low ratio between the periods of service and maintenance.

Consists of a cylindrical body with connecting flanges disposed perpendicular to filtering element, has a basket made of a perforated calendered sheet.

Standard equipment includes a basket suitable for high pressure, easy maintenance and replacement, capable of filtering more than 300% of the inlet area.



FILTER CONICAL



Series: FC01 – FC02 – FC03
from 2" to 24" and over, rating from 150 to 2500

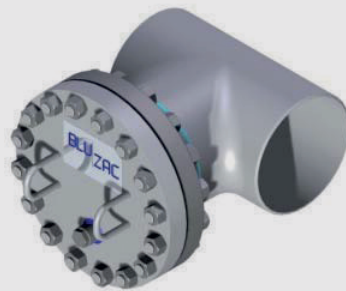
Temporary filter, in-line, suitable for filtering fluids or gases, designed for short periods of employment, such as the fine-tuning and start-up of a plant.

Installed to remove any coarse detritus such as rags, electrodes, deposits scale and rust left inside the pipes.

Consist of a rolled perforated sheet in the form of a cone welded perpendicularly to a ring joint, the conical filter is easy to install and replace because it is positioned between two flanges of a pipe.

Filter suitable for high pressures, easy to maintain and replace and capable of filtration of more than 200% of the inlet area.

FILTER TEE



Series: FTÉE – FATE (angle tee)
from 2" to 24" and over, rating from 150 to 2500

Permanent filter, straight line, suitable for filtering fluids in either the liquid state (water, seawater, petroleum and its derivatives) or the gaseous state (gas, air, chemical products) through a perforated plate filter element placed perpendicular to the direction of flow.

Obtained from an extruded or welded T-joint, it ensures a large surface area for flow and thus offers a high filtration capacity with a low loss of pressure even at high rates.

The standard equipment includes a screen suitable for high pressures, which is easy to maintain and replace and capable of filtration of more than 200% of the inlet area.

traps

THERMODYNAMIC STEAM TRAPS



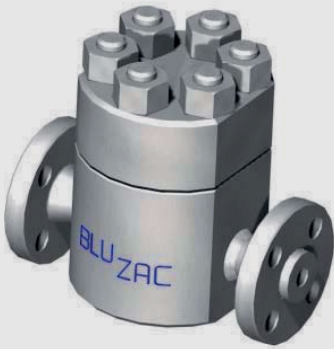
Series: TTD50
from 1/4" to 4" max rating 800
Working Differential Pressure:
from min 0.2 bar to max 50 bar

How it works:

1. The disc is free and rests on the housing; in the steam trap there is no fluid of any kind.
2. Start-up: when the condensate begins to circulate, the disc is prevented from adhering to the housing, making the steam trap discharge the excess condensate.
3. As the system heats up, steam begins to arrive, traveling faster than the condensate due to the effect of Bernoulli's principle; a reduction in pressure is generated inside the housing, forcing the disc to adhering to it and trapping the steam inside.
4. When the condensate arrives, the speed of flow will reduce, releasing the disc from the housing and allowing the steam trap to discharge the excess condensate.

Special
Components

HIGH PRESSURE THERMODYNAMIC TRAPS



Series: TTD100 – TTD150
from 1/4" to 4" max rating 1500
Working Differential Pressure:
from min 1 bar to max 150 bar

How it works:

1. The disc is free and rests on the housing; in the steam trap there is no fluid of any kind.
2. Start-up: when the condensate begins to circulate, the disc is prevented from adhering to the housing, making the steam trap discharge the excess condensate.
3. As the system heats up, steam begins to arrive, traveling faster than the condensate due to the effect of Bernoulli's principle; a reduction in pressure is generated inside the housing, forcing the disc to adhering to it and trapping the steam inside.
4. When the condensate arrives, the speed of flow will reduce, releasing the disc from the housing and allowing the steam trap to discharge the excess condensate.

INVERTED BUCKET STEAM TRAPS

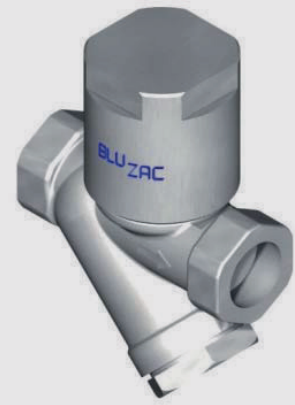


Series: TIBA – TIBB – TIBC- TIBD – TIBE
from 1/2" to 6" max rating 1500
Working Differential Pressure:
from min 0.1 bar to max 80 bar

How it works:

1. The bucket is placed on the base, the shutter is opened; in the steam trap there is no fluid of any kind.
2. Start-up: when the condensate begins to circulate, the bucket is prevented from floating and the steam trap eliminates the excess condensate.
3. As the system heats up, the condensate reduces and steam starts to arrive, accumulating inside the vessel, trapped under the inverted bucket, which allows it to float on the condensate and keep the shutter closed.
4. As the steam condenses, the bucket sinks, returning to the base of the vessel where it opens the escape valve, permitting the internal pressure to discharge the accumulated condensate.

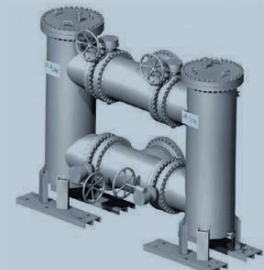
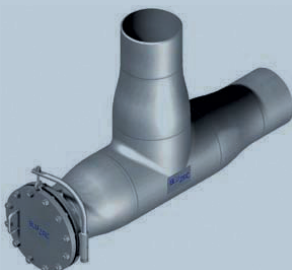
THERMOSTATIC CAPSULE OR BIMETALLIC STEAM TRAPS

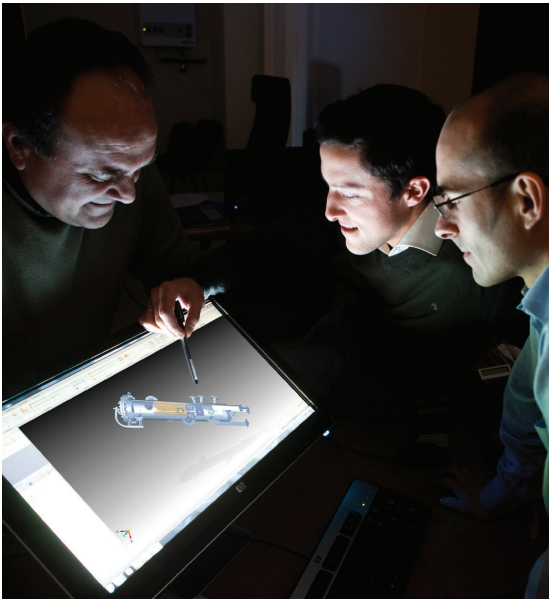


Series: TSC22 – TSB25
from 1/4" to 2 1/2" max rating 300
Working Differential Pressure:
from min 0.2 bar to max 25 bar

How it works:

1. The membrane inside the capsule, which is attached to the housing, is raised.
2. Start-up: when the condensate begins to circulate, the capsule is prevented from reacting to the low temperature, keeping the membrane and the shutter in the open position.
3. As the system heats up, the condensate reduces and steam begins to arrive, heating the fluid inside the capsule and expanding its volume. The thrust this generates, presses the shutter onto the housing, blocking the flow and trapping the steam.
4. As more condensate accumulates, the fluid inside the capsule cools, making the membrane contract, opening the housing and discharging the excess condensate.





STEAM TRAPS:

THERMODYNAMIC
THERMOSTATIC
INVERTED BUCKET
BIMETALLIC

FILTERS:

TEE
ANGLE TEE
CARTRIDGE
DUPLEX
MONOBASKET
CONICAL
"Y" CAST FORGED
WELDED MACHINED

SIGHT GLASS:

CAST
FORGED
WELDED
MACHINED

OTHER:

FLAME ARRESTOR
SAMPLING SYSTEM
SAMPLE COOLER





a division of:



VIA ABRUZZO 26
29010 ROTTOFRENO (PC) - ITALY



PHONE +39 0523 78411
FAX +39 0523 780123



INFO@BLUZAC.COM
WWW.BLUZAC.COM
WEB@STEELTRADE.IT
WWW.STEELTRADE.IT

