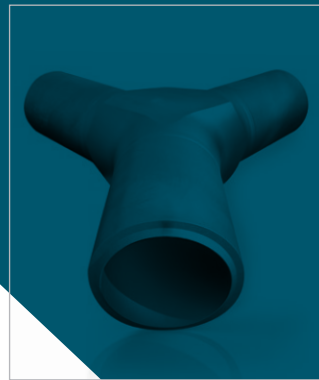
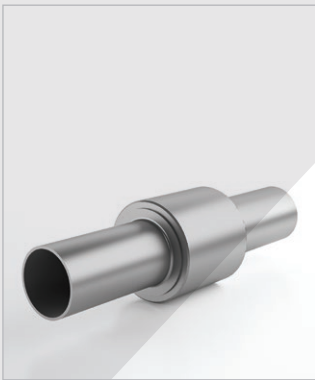




steeltrade
steel piping components

FULLY INTEGRATED GROUP



ONE-STOP-SHOP

PIPELINE PROJECTS
PACKAGE SOLUTIONS
IN THE ENERGY AND
PETROCHEMICAL INDUSTRY

SINCE 1981

Founded in 1981, **Steeltrade** has grown into a **group of companies** capable of offering a unique solution of combined services and products.

FULLY INTEGRATED GROUP

=

MANUFACTURING

+

STOCK-HOLDING

+

DISTRIBUTION

State-of-the-art Italian quality manufacturing facilities to provide special components, customized solutions and commodities **among piping, fittings, flanges, valves, strainers, steam traps, insulation joints.**

Our products are manufactured and designed according to strict international standards and certifications to provide the best-in-class products to our satisfy our client's needs.

A full stock division to supply a wide range of products from **fittings, pipes, flanges and plates** in various dimensions and materials at a competitive price with immediate availability.

■ BW FITTINGS

1/2" - 24" WPB/WPL6

1/2" - 8" 304/316/31803/32760/32750

1/2" - 24" 254SMO

■ PIPES

■ FLANGES

■ PLATES

An advanced worldwide network of suppliers and manufacturing plants to provide a complete-package solution that embraces a wide product range guaranteeing adherence to delivery time frames and is trusted to provide technical and qualitative support counting on more than 10.000 trusted suppliers.

Manufacturing plants

1

PLANT

BW FITTINGS,
SPECIAL FITTINGS & FLANGES

2

PLANT

FILTERS, STRAINERS
AND STEAM TRAPS

3

PLANT

MONOLITHIC
INSULATION JOINTS

4

PLANT

BALL & BUTTERFLY VALVES, GATE VALVES, CHECK VALVES
AND GLOBE VALVES / CONTROL VALVES

5

PLANT

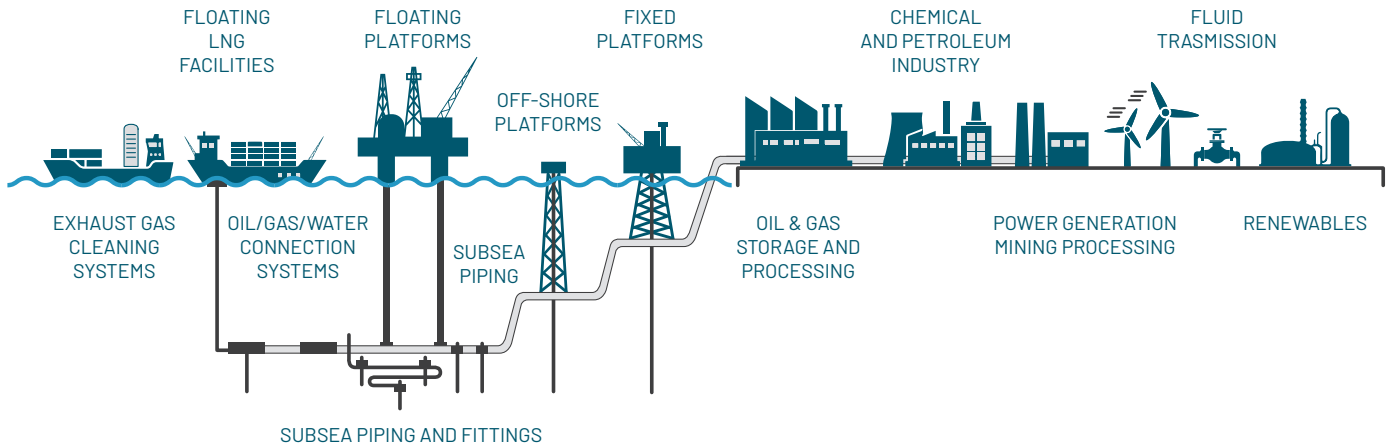
OT GEARBOXES, SUBSEA GEARBOXES
AND BEVEL GEARBOXES

6

PLANT

MULTIROLL BEARINGS, BACK-UP ROLLERS, SLEWING BEARINGS,
LIFT GUIDES "H" STANDARD & "U" STANDARD

General process flow applications



Worldwide presence

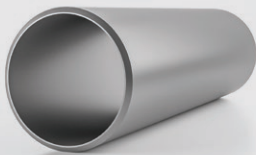


1 Group, headquartered in Northern Italy and a **daily global** presence in over 60 countries, that meets clients' needs through our integrated services.

Steeltrade's Offices and Production plants spread over **100.000 sqm** all over the world.

Our products

pipes



SEAMLESS
COLD & HOT FINISHED
FORGED
BIMETALLIC
WELDED
LONGITUDINAL
SPIRAL

TYPE

ROUND
RECTANGULAR
HEAVY WALL THICKNESS
FLEXIBLE
SPECIAL & NOT
STANDARD

STANDARD

API PSL1/PSL2
ASTM
ASME
EN (DIN)
ISO
AWWA

bw fittings



SEAMLESS
COLD & HOT FINISHED
FORGED
WELDED

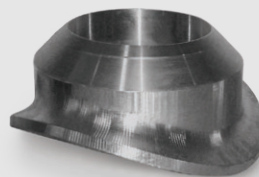
TYPE

45°/90°/180° LR & SR
ELBOWS
EQUAL & REDUCED TEES
CONCENTRIC &
ECCENTRIC REDUCERS
CAPS
CROSS
LARGE RADIUS BEND
SPECIAL FITTINGS

STANDARD

ASTM
ASME
EN
MSS SP
AWWA
JIS

forged fittings



FORGED FITTINGS

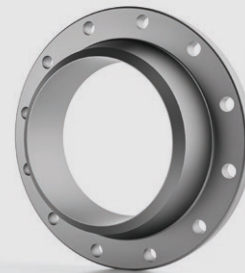
TYPE

SW/THRD ELBOWS
TEES
CROSSES
COUPLINGS
REDUCERS
SW/WELD/THRD
OUTLETS
ELB OUTLETS
SWAGED NIPPLES
BUSHINGS
M/F/HEX UNIONS
PIPE NIPPLES
CAPS
PLUGS

STANDARD

ASTM
ASME
EN (DIN)

flanges



FORGED
CAST

TYPE

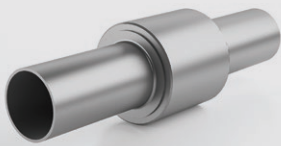
WELDING NECK
SLIP ON
LAP-JOINT
THREADED
SOCKET-WELD
BLIND
BLANK
ORFICE
ANCHOR
SWIVEL

STANDARD

ASTM
ASME
API
EN (DIN)
JIS

Our products

insulating joints



MONOLITHIC
INSULATION JOINTS

TYPE

BUTT WELD
FLANGED

STANDARD

ASTM
ASME
UNS
EN

valves



BALL
GATE
GLOBE
CHECK
BUFFERFLY
NEEDLE
PRESSURE SAFETY
CONTROL
DIAPHRAGM
PRESSURE RELIEF
MULTIPLE WAYS
DOUBLE BLOCK
AND BLEED
MOGAS
RISING STEM
DUAL EXPANDING PLUG
PIGGABLE

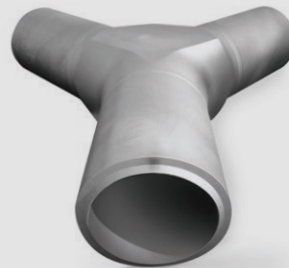
TYPE

FORGED
CAST
ACTUATED
MANUAL

STANDARD

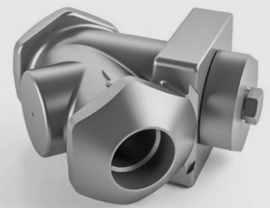
ASTM
EN(DIN)
API
AWWA
BS
MSS SP

special components



BARRED TEES
FORGED AND WELDED
LATERAL TEES
SPECIAL FITTINGS
FORGED PIPES
FORGED WYE PIECE
PIPE SPOOLS
LARGE RADIUS BENDS
ANCHOR, SWIVEL,
MISALIGNMENT
FLANGES
COMPACT FLANGES
WELDOVERLAY
FLANGES AND
FITTINGS
CLAMP CONNECTORS
QUICK CLOSURES

industrial filters



Y STRAINERS
T STRAINERS
TEMPORARY
STRAINERS
MONOBASKET
STRAINERS
DUPLEX BASKET
FILTERS
CARTRIDGE
STRAINERS

steam traps

THERMODYNAMIC
STEAM TRAPS
INVERTED BUCKET
STEAM TRAPS
THERMOSTATIC STEAM
TRAPS
BIMETALLIC STEAM
TRAPS

Materials

CARBON STEEL | STAINLESS STEEL | ALLOY STEEL | DUPLEX | SUPER DUPLEX | 254SMO | MONEL | NICKEL
| INCONEL | INCOLOY | COPPER | COPPERNICKEL | ALUMINUM | URANUS | TITANIUM | OTHER ALLOYS

Testing

MECHANICAL TESTS

- tension tests at ambient and hot temperatures (ASTM/EN)
- resilience tests (ASTM/EN)
- flattening tests (ASTM/EN)
- bend tests (ASTM/EN)
- CTOD tests (ASTM/EN)
- step cooling tests (ASTM)
- hardness tests with micrography and macrography with or without simulated thermal treatments (ASTM/EN)
- metal inclusion controls (ASTM/EN)

CHEMICAL TESTS

- chemical analyses of product
- corrosive tests (HIC or SSCC in accordance with TM0284/TM0177 or to customer specification)
- intergranular corrosion tests
- G48
- HIC
- pitting corrosion tests
- ferrite check
- other corrosive tests in accordance with ASTM STD/NACE)

NDE TESTS

- X-ray examinations (ASTM/EN), ultrasonic examinations (ASTM/EN)
- testing with magnetic particle (ASTM/EN)
- testing with liquid penetrants (ASTM/EN)
- P.M.I. tests

Certifications

- ISO 9001
- ISO 14001
- PED CERTIFICATE 2014/68/EU
- EAC
- OCCUPATIONAL HEALTH AND SAFETY ASSESSMENT SERIES



Key facts



ON TIME DELIVERY

88% of orders delivered ahead of **contractual times**.



GLOBAL COMPANY

Our products have been supplied to **72 countries**, strengthening our global presence and our commitment to quality and innovation.



FULL STOCK AVAILABILITY

Over **60.000 pieces** of piping material and valves in Carbon Steel, Alloy Steel, Stainless Steel, Monel, Inconel.



GUARANTEED QUALITY

99,999% of compliant materials and **0 injuries**, confirming our commitment to safety and quality.



VIA ABRUZZO 26
29010 ROTTOFRENO (PC) - ITALY



PHONE +39 0523 78411
FAX +39 0523 780123



WEB@STEELTRADE.IT
WWW.STEELTRADE.IT

Italian Quality

