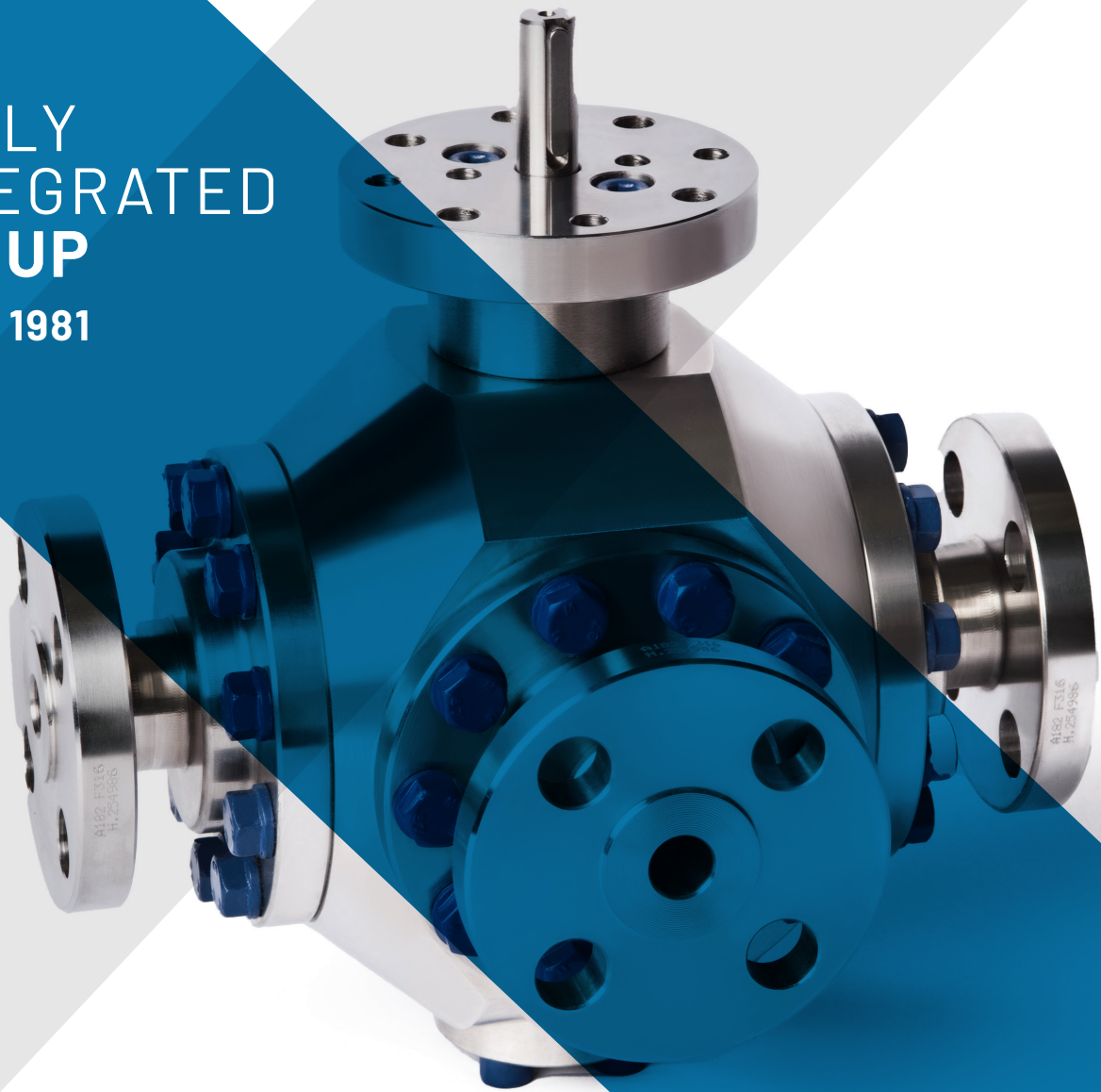




steeltrade
steel piping components

**FULLY
INTEGRATED
GROUP**
SINCE 1981



**DESIGN THE FUTURE
WITH EXPERIENCE AND INNOVATION**

VALVES FOR WATER, STEAM, AIR, GAS,
OILS, HYDROCARBONS AND OTHER
AGGRESSIVE FLUIDS.

Valves

Our products

Ball Valves



Size range: ½" to 72"
Pressure Class Range: 150 to 2.500

Trunnion / Floating metal seated or soft seated
Top Entry and Side Entry
Bolted Body, Threaded Body, Fully Welded Body
Double Block & Bleed Modular dual ball
Multiple way

Because of their excellent operating characteristics, ball valves are used for the broadest spectrum of isolation applications and are available in a wide range of sizes, pressure ratings, materials and trim. Ball valves are quick acting, allows flow in either direction, has a low pressure drop with bubble tight shut off. It is easily actuated with multiple designs possible.

Control Valves



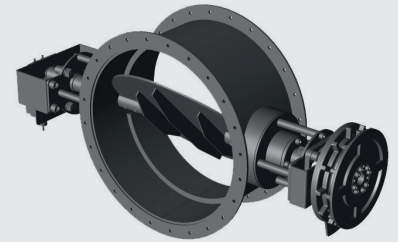
Size range: ½" to 20"
Pressure Class Range: 150 to 2.500

Steeltrade can supply any type of globe and rotary reciprocating control valves providing best-fit-solutions to Customers of Oil & Gas, LNG, Petrochemical and Power Market.

The range includes Reciprocating Globe, Angle and 3-way, Rotary eccentric Plug, Double and Triple Offset Butterfly, Segmented V-Ball, Specialty Ball.

Valves are manufactured in Italy and provided with Italian Origin certificate.

Butterfly Valves



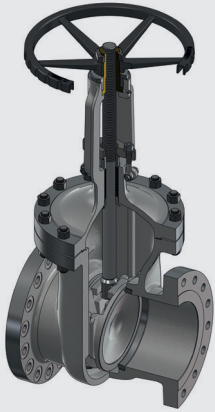
Size range: ½" to 48"
Pressure Class Range: 150 to 2.500

Single Offset:
Size range 2" to 48" ANSI 150 and PN from 6 up to 25 pressure class.
Double Offset:
Size range 2" to 24" Pressure Class Range 150 / 300.
Triple Offset:
Size range 3" to 112" Pressure Class Range ASME 150 to 900/DIN PN 10 to 100 ISO PN | Temperature Range -425 to +1500°F [-60 to +450°C] for stainless steel body material.

Body Styles Double flanged, Lugged, Wafer, Butt weld

Butterfly valve derives its name from the action of its disc which operates at right angle to flow. It is designed for flow isolation. The disc impinges against a seat linear to provide sealing with low operating torque. Compact and with simple construction, butterfly valves facilitate easy pipe arrangement. Butterfly valves are quick acting with good regulation characteristics. Compact and light with low pressure isolation. They range in a wide range of size and can be controlled by a notched handle, gear, or pneumatic or electric actuators.

Gate Valves



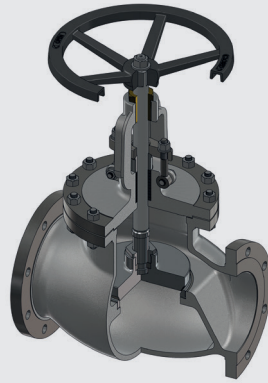
Size range: ½" to 54"
Pressure Class Range: 150 to 2.500

Valves designed for an excellent seal and low pressure loss. Characterized by the fact that they have two inclined sealing seats to guarantee an excellent seal, low pressure loss. Used as interception devices (on/off service) for large diameters and high pressures.

These valves are bidirectional. Gate valves are general service valves that can be made in a broad spectrum of sizes using a variety of materials. Gate valves are primarily used to turn on or shut the flow as opposed to regulating flow and are characterized by a traveling wedge, which is moved with operation of the stem nut. The wedge travels perpendicular to the direction of the flow.

These valves usually have a minimum pressure drop when fully opened, provide tight shut-off when fully closed, and remain relatively free of contamination build up.

Globe Valves



Size range: ½" to 20"
Pressure Class Range: 150 to 2.500

The best solution for the regulation of the fluid. The motion of the closure member takes place in a direction perpendicular to the seat. Ideal for regulating the flow rate of the fluid.

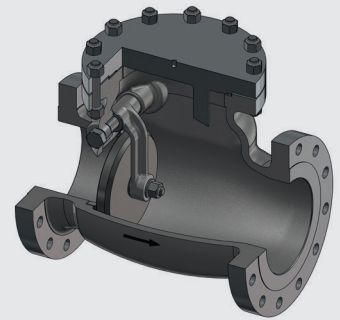
There are different morphologies: T pattern, Y type and angle type. For a better regulation the obturator can be shaped according to the customer's request.

Globe valves are primarily used as control valves where throttling or both throttling and shut-off are required. These valves can be used also for on-off service; however, because of the design, pressure drop becomes inherent.

This is generally confined to on-off applications where the valve is normally closed and pressure drop is not important when the valve is open.

Globe valves are uni-directional valves and normal applications will find the globe valve with the flow and pressure under the disc.

Swing Check Valves



Size range: ½" to 48"
Pressure Class Range: 150 to 2.500

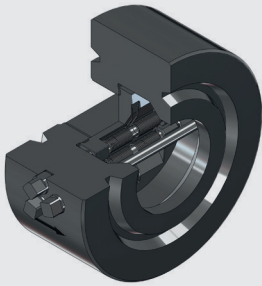
The non-return valves with the lowest pressure drop. The non-return valves are used to prevent the inversion of the flow in the pipe; they are unidirectional and self-operated.

The swing check valves are the valve with the lowest pressure drop; they can be equipped with a dumping system. Sometimes referred to as non-return valve, check valves prevent back-flow, constantly keeping flow in one direction.

Check valves are designed to close quickly and automatically with positive shut off in either horizontal or vertical (flow up) pipe runs. Inherently, swing check valves have a low pressure drop and are best suitable for velocity applications.

Our enclosure design allows check valves to close completely and remain closed even with no flow when installed in a pipe run.

Dual-Plate Check Valves



Size range: 2" to 36"
Pressure Class Range: 150 to 2.500

Built in wafer execution. Generally built in Wafer execution, they are also built with a soft seal. Dual Plate wafer check valve is typically installed in support of automatic shutdown valves and safety devices.

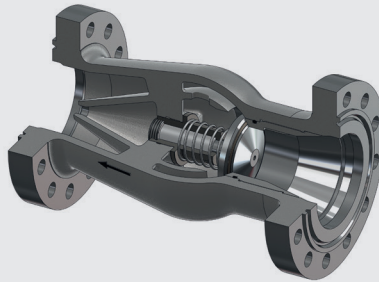
Its purpose is to prevent and protect devices against the consequences of unintended reverse flow.

It is immediately responsive and fast acting in its closure, thereby maximizing protection to prevent or minimize the adverse effect of any back-flow.

It is not an isolating valve and not to be used as such. Dual Plate valves provides enhance protection for safety of equipment, plant, and against the loss of production.

It is widely applied in the petroleum, petrochemical, LNG, and other industries.

Nozzle Check Valves

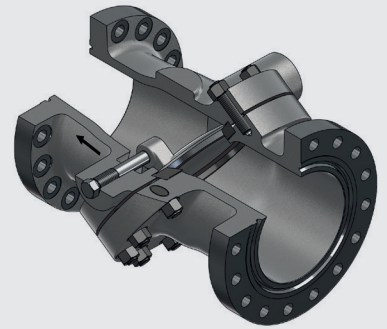


Size range: 2" to 36"
Pressure Class Range: 150 to 2.500

The axial flow valves are the check valves with the best fluid-dynamic characteristics, they are carried out with a soft or metallic seal.

This Valve is the preferred solution for critical non-return applications such as the protection of pumps in liquid applications or compressors in gas systems where back-flow could cause the pump or compressor to shut down.

Tilting Check Valves



Size range: 2" to 36"
Pressure Class Range: 150 to 2.500

Valves built to reduce the hammer blow. The best solution for those who want to reduce the hammer blow to a minimum; the particular morphology of the disc allows a balanced closure.

Miscellaneous Valves

A broad variety of other valves such as Bellow Sealed Valves, Cryogenics Valves, Pressure Seal Valves, Lubricated & Non Lubricated Plug valves, Needle Valves, Safety Valves, Y Strainer. Pneumatic, Electric & Hydraulic Actuators.



The **main quality controls** carried out by Steeltrade are:

Dimensional Inspection

All necessary equipment in house

Non-Destructive Testing

MT: Magnetic particles examination
PT: Dye penetrant examination
UT: Ultrasonic examination
RT: Radiographic examination

Pressure Test according to

API 598 – ISO 5208 – BS 6755 – API6D
ASME B16.34 – EN 12266
High Pressure Hydraulic Shell Test
High Pressure Hydraulic Back Seat Test
High Pressure Hydraulic Seat Test
Low Pressure Pneumatic Seat Test
Functional Test

Chemical Analysis

PMI: Positive material Identification
Mechanical Test
Hardness Test
Charpy-V impact Test

Available also:

Fugitive emission test (helium/nitrogen)
Cryogenic Test
Corrosion Test
Cleanliness for oxygen application
Fire Safe Test
High Pressure gas Test
Hyperbaric test for subsea application
Torque Test

Proudly **Made in Italy**





valves
division

Part of **Steeltrade Group**



VIA ABRUZZO 26
29010 ROTTOFRENO (PC) - ITALY



PHONE +39 0523 78411
FAX +39 0523 780123



WEB@STEELTRADE.IT
WWW.STEELTRADE.IT

